



**Your trusted global partner
in life-saving research.**

For over 50 years, Allentown has provided critical solutions to the biomedical research community. Our high-quality equipment and advanced vivarium systems continue to define and exceed industry standards. Like everything we do, our unparalleled customer service is stamped with the Allentown hallmarks of integrity, dedication and care.

Ferret

HOUSING



OVERVIEW

Providing critical solutions with integrity and care.



Long Lasting, Multi-Purpose Housing

The ferret cage rack system is a natural extension of Allentown's comprehensive family of ferret racks and cages. The ferret rack design is based on Allentown's classic line of stainless steel housing and decades of proven caging experience and design expertise.

Standard and Custom Ferret Housing Solutions – Built to our exacting quality standards, the Allentown ferret housing units are a long lasting and efficient ferret housing solution. High-quality materials, manufacturing and ergonomic features allow us to provide you with the perfect ferret housing solution for your facility and your research. Whether you choose from a long line of reliable housing designs, or partner with us to customize to your specific needs, Allentown has the ferret housing solution that you have been looking for.

Ventilated Rabbit / Ferret Housing: Negative Pressure to Capture Airborne Particulate The ventilated ferret cage rack system is a natural extension of Allentown's comprehensive family of housing solutions. Developed to help control dust and dander, these negative pressure control units have been used successfully in a wide array of research applications. Long lasting, innovative, safe and reliable, this unit's design is based upon Allentown's classic line of stainless steel housing and decades of proven housing and design experience.

Individually Ventilated Ferret Housing for Superior Airflow and Control of the Micro-Environment – With the recent increase of the use of ferrets in biomedical research, many of our customers were placed in the difficult position of having to house ferrets in housing designed for other species. Hearing requests for a better housing solution, Allentown developed the Ferret IVC. Based on years of IVC expertise and proven air-flow delivery methods, the Allentown IVC Ferret housing unit provides an innovative and reliable ferret housing solution that will perform for many years to come.

OVERVIEW



Rack Features

Stainless steel constructed rack unit, lightweight, tubular, crevice-free design

Unibody design reduces noise from animal movement and rack transportation

Upper perforated panel forming rear cage back pop-riveted to rack structure

Removable, electropolished doors with 76 mm x 127 mm welded horizontal cardholders

127 mm diameter stainless steel casters – two with brakes

Optional “J” type feeders – 114 mm wide

Clear removable divider panels

Note: Center divider is not compatible with older units

Options:

- 3-cage and custom configurations available
- Stainless steel automatic watering

Cage Features

Floor space of 4703 cm² and 450 mm animal height

Plastic injection molded cage with 16 mm circular floor perforations

Plastic cage and excreta pan each weigh 3.6 kg, and are washable in tunnel or rack washer up to 88 °C

No-tip, drawer-type design allows cage to pull forward, simplifying animal removal

Smooth, rounded extrusions adjacent to holes in cage floor allow for more efficient waste run off into excreta pan below, and provide warm, quiet walk space that reduces sore animal hocks

Plastic cage body and pan resistant to alkaline and acid detergents

Cages stack for ease of transport and compact storage

Options:

- Autoclavable cage and pan*
- 473 mL and 946 mL water bottles
- Opaque flip-up resting board

COMPONENTS

Cage System
756 mm x 127 mm x 750 mm
Floor space: 4703 cm²



Bottle



473 mL
Item # BW100F-PL



946 mL
Item # BW101F-PL

Feeder



J-Type Feeder
114 mm x 162 mm x 143 mm
Item # F45JB

Enrichment



Resting Board
249 mm x 256 mm x 699 mm
Item # 314820-1

Cage



Euro Cage
756 mm x 127 mm x 750 mm
Item # 411974-1

Pan

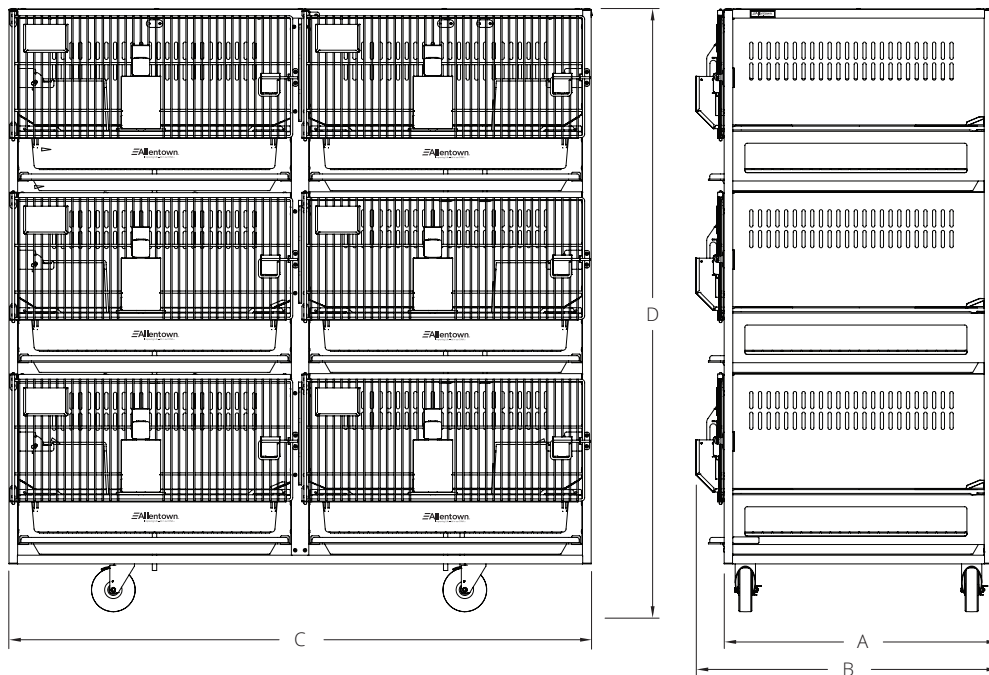


Dry Pan
822 mm x 51 mm x 787 mm
Item # RB5 PAN

SPECIFICATIONS

Size	Rack Dimensions				Internal Cage Dimensions			Matrix		Weight ² kg	Animal Capacity
	Depth (A)	Depth (B)	Width (C)	Height ¹ (D)	Depth	Width	Height	Col.	Row		
	mm	mm	mm	mm	mm	mm	mm	Col.	Row		
Euro Rabbit											
6	784	866	1699	1760	686	686	450	2	3	189	6

¹ Height includes casters ² All weights are approximations



OVERVIEW – VENTILATED SYSTEM



Rack Features

All stainless steel body construction

Removable, gasketed glass doors with silicon seal and wash-cycle door locks

Removable rod-design electropolished doors with 76 mm x 127 mm welded horizontal cardholders

"J" type feeders – 114 mm wide with hinged lid

Washable, reusable prefilters

127 mm diameter stainless steel casters

Options:

- Multiple rack configurations available
- Custom door configurations available
- Stainless steel automatic watering

Cage Features

Floor space of 4703 cm² and 450 mm animal height

Stainless steel cage

Individual cage filters

Squeeze backs

Options:

- Autoclavable cage and pan*
- Stackable stainless steel excreta pan
- 473 mL water bottles
- Cage dividers

COMPONENTS – VENTILATED SYSTEM

Cage System
613 mm x 501 mm x 886 mm
Floor space: 4703 cm²



Bottle



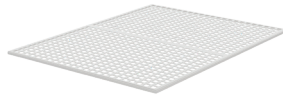
473 mL
Item # BW100F-PL

Feeder



J-Type Feeder with Hinged Lid
114 mm x 162 mm x 143 mm
Item # F45JB

Cage Floor

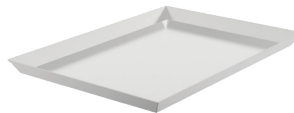


Perforated
781 mm x 10 mm x 603 mm
Item # 205674



Solid
781 mm x 10 mm x 603 mm
Item # 227362

Pan



Dry Pan
841 mm x 48 mm x 606 mm
Item # 118345

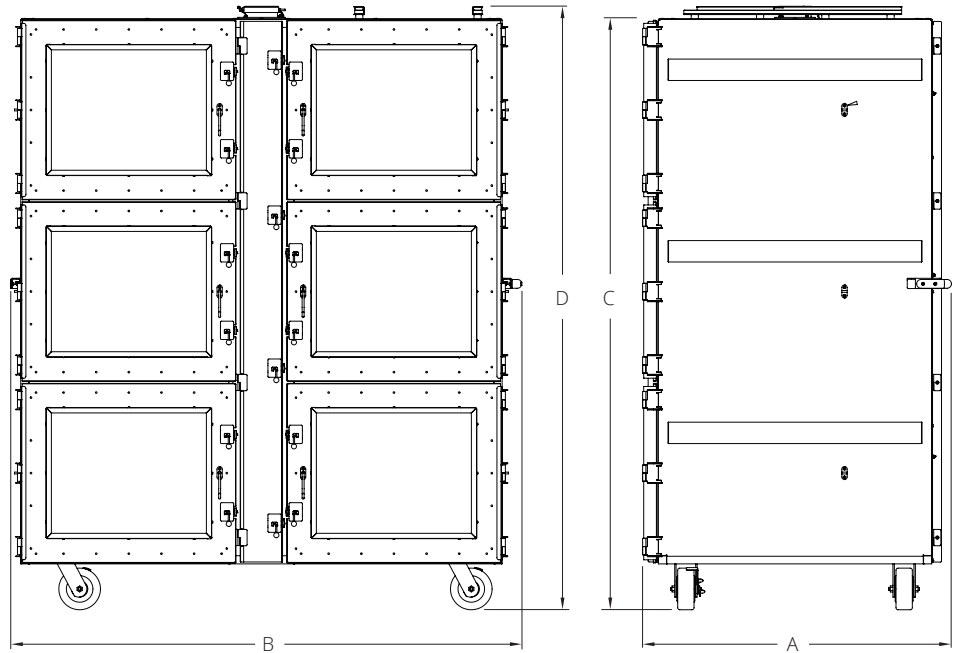
SPECIFICATIONS – VENTILATED SYSTEM

Size	Depth (A)	Width (B)	Height ¹ (C)	Height ^{1,2} (D)	Matrix		Weight ³	Animal Capacity	Exhaust Air: Normal (-)		Exhaust Air: Highflow (-)		Energy Use	Heat Load
	mm	mm	mm	mm	Col.	Row	kg		m ³ / hr	ACH	m ³ / hr	ACH	Watts	Watts
Ventilated Ferret														
6	961	1621	1735	1878	2	3	198	6	68	35	204	105	48	93

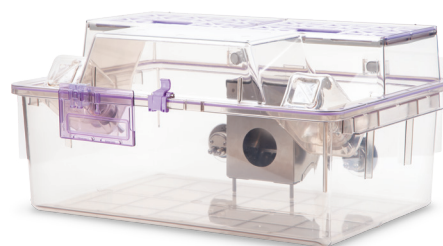
Note: a.) Airflow at sea-level b.) Rack weight without blowers, animals, bedding or watering c.) Airflow tolerance ± 10 % d.) Other configurations available.
¹ Height includes casters. Add Add 247 mm to 297 mm for rack mounted blowers ² Height includes runners and collars ³ All weights are approximations

Notes

- Negative airflow only
- Two airflow settings: normal and highflow



OVERVIEW – VENTILATED SYSTEM: NEXGEN 1800



IVC System

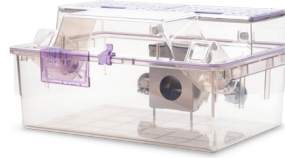
- Positive or negative precision air controlled rack
- Exhaust plenum always negative to the room
- 10, 15, 20, and 30 cage capacities available
- Whole rack system and cages are autoclavable up to 134 °C¹ and chemically sterilisable
- Plastic (polysulfone) cage support runners with integrated spring-operated cage lock with docking indicator
- Ergonomic, single-finger motion docking with auto-locking feature
- Multi-directional 127 mm diameter stainless steel casters with gray polypropylene wheels with sealed ball bearings and four foot-operated brakes
- Dismantable horizontal airflow manifolds with tethered dual plastic end caps for ease of cleaning
- Rear exhaust and supply plenum configurations for single-sided IVCs, or same side exhaust and supply plenum configurations for double-sided IVCs
- 100 mm diameter vertical supply and 100 mm diameter vertical exhaust plenums with back and bottom door access
- 304 stainless steel, welded frame construction, utilizing both square and rectangular structural tubing
- Cage air tubes are 304 stainless steel
- Automatic watering available
- Row and column identification labels
- Model number and serial number identification labels
- Compatible with all configurations of EcoFlo™ blowers
- Compatible with WiVarium Plus™ and Wi-Com Vantage™
- Compatible with Sentinel™ EAD® colony health monitoring system
- Compatible with Wi-Com Sensus™ RFID census solution

Cage System

- Cage floor space of 1800 cm²
- Cage height of 254 mm, plus multiple enrichment options, permits bipedal posture and animal enrichment
- Unobstructed views into and out of cage
- Wider, more ergonomic design for balanced weight distribution during handling
- Ergonomic handles on side of cage for ease of handling
- Clear polysulfone plastic
- Gasketed cage lid ensures safety and protection from damage
- Clear cage and flip-up / stay-up cardholders improve observations
- Easily accessible water bottles (EBT)
- Hinged filter retainer swings up for easy filter replacements
- Compact nesting and stacking for more efficient autoclaving throughput
- Available with or without locks and with multiple feeder configurations

COMPONENTS – VENTILATED SYSTEM: NEXGEN 1800

Cage System with Hanging Feeder
588 mm x 286 mm x 412 mm
Floor space: 1800 cm²



Bottle



480 mL (filled)
Item # PC16BHT (bottle)
Item # SPL48RS-18 (spin-on lid)

Top

External Bottle Top
Optional Filter Guard available
572 mm x 171 mm x 412 mm | 1860 g
Item # 227665-1 (without locks)
Item # 227665-2 (with locks)



Cardholder



76 mm x 102 mm Vertical
Item # VH34P9-8
(also available in 76 mm x 127 mm
Item # VH35P9-8)



76 mm x 102 mm Horizontal
Item # HH34P9-8
(also available in 76 mm x 127 mm
Item # HH35P9-8)

WBL / Feeder



Chew Guard
Food capacity: 998 g
553 mm x 174 mm x 386 mm
1633 g | Item #: 414194



**Hanging Feeder:
Guinea Pig/Ferret**
Food capacity: 1202 g
129 mm x 185 mm x 107 mm
653 g | Item #: 228560

Enrichment



Front Loft
150 mm x 8 mm x 89 mm
68 g | Item #: 227356



**Rear Shelf
(WBL Attachment)**
538 mm x 13 mm x 138 mm
476 g | Item #: 227694



**Rear Shelf
(Stand Alone)**
552 mm x 18 mm x 387 mm
862 g | Item #: 227429

Cage

Cage
588 mm x 194 mm x 395 mm | 2449 g
Item # 315351-1 (without automatic watering)
Item # 315351-2 (with automatic watering)



SPECIFICATIONS – VENTILATED SYSTEM: NEXGEN 1800

Size	Depth (A)	Width (B)	Height ¹ (C)	Height ^{1,2} (D)	Matrix		Weights ³ (loaded)	Weights ³ (unloaded)	Animal Capacity	ACH	Supply Air m ³ / hr	Exhaust Air (+) m ³ / hr	Exhaust Air (-) m ³ / hr	Energy Use Watts	Heat Load Watts	
	mm	mm	mm	mm	Col.	Row										
127 mm Casters																
10	622	1283	1697	1727	2	5	1	191	93	30	60	23.8	18.7	30.6	13.2	11.8
15	622	1882	1697	1727	3	5	1	200	96	45	60	37.4	28.9	47.6	14.4	13.0
20	889	1389	1697	1727	2	5	2	231	113	60	60	49.3	37.4	61.2	16.7	15.0
30	889	1988	1697	1727	3	5	2	286	136	90	50	61.2	45.9	76.5	22.6	20.4

Note: a.) Airflow at sea-level b.) Rack weight without blowers, animals, bedding or watering c.) Airflow tolerance ± 10 % d.) Other configurations available.
¹ Height includes casters. Add 247 mm to 297 mm for rack mounted blowers ² Height includes removable runners and collars ³ All weights are approximations

Notes

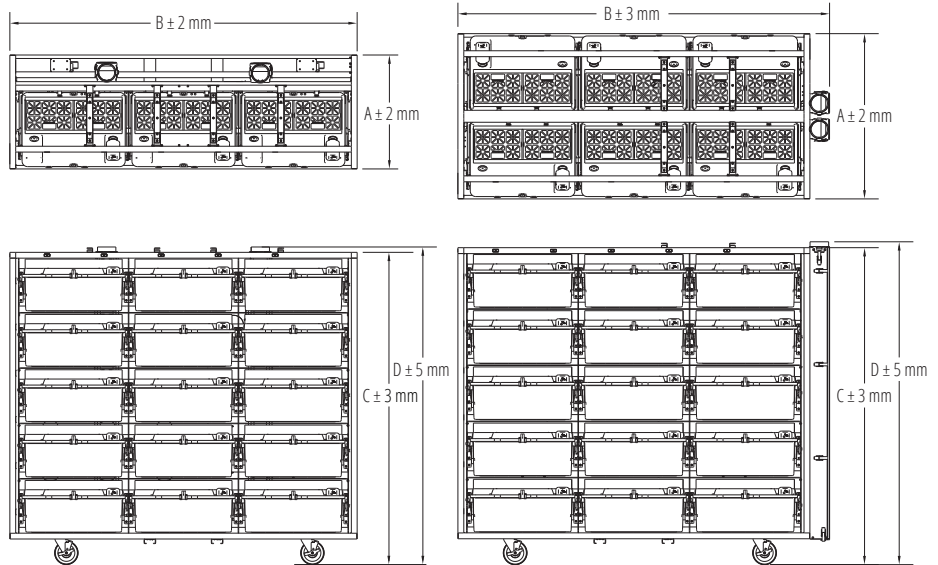
Ergonomic handles on side of cage for ease of handling

127 mm diameter casters

Optional top panel

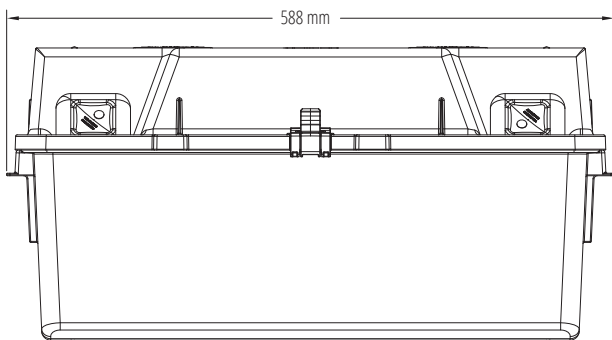
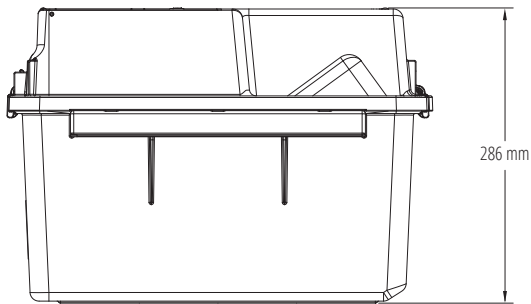
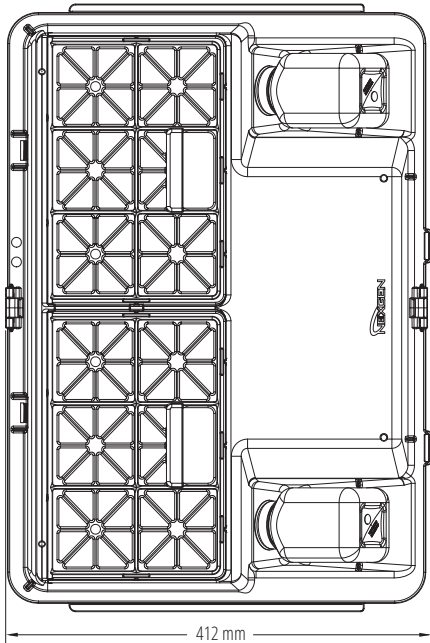
Optional bumpers may change dimensions

Multiple blower configurations

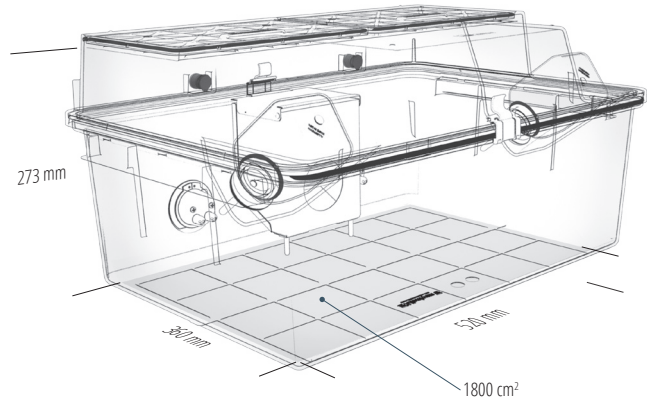


SPECIFICATIONS – VENTILATED SYSTEM: NEXGEN 1800

External Dimensions

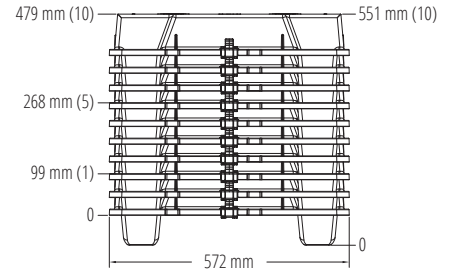
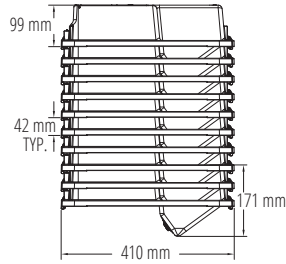
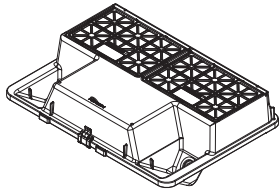


Internal Dimensions

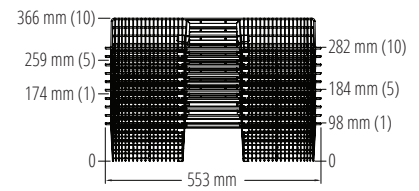
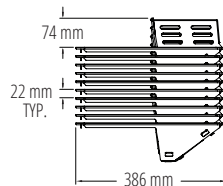
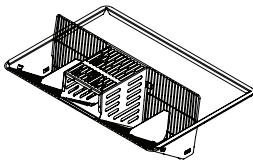


SPECIFICATIONS – VENTILATED SYSTEM: NEXGEN 1800

External Bottle Top



Chew Guard



Cage

