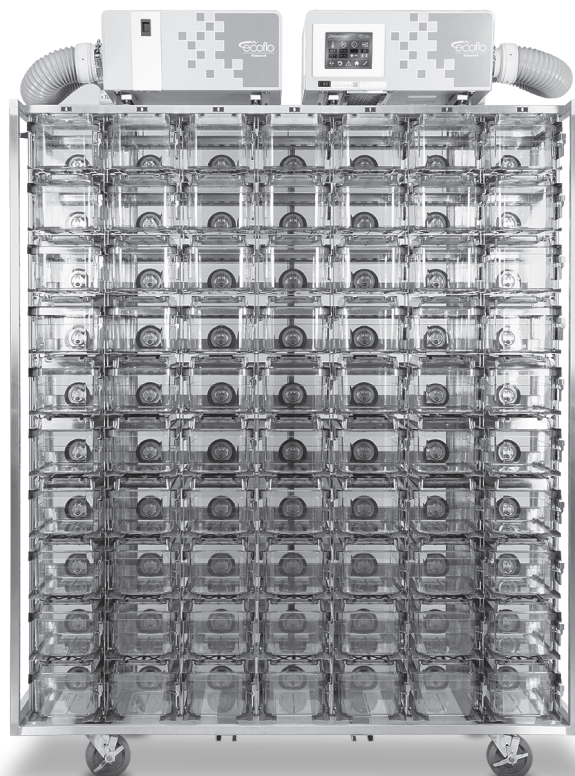




**Your trusted global partner
in life-saving research.**

For over 50 years, Allentown has provided critical solutions to the biomedical research community. Our high-quality equipment and advanced vivarium systems continue to define and exceed industry standards. Like everything we do, our unparalleled customer service is stamped with the Allentown hallmarks of integrity, dedication and care.

Jag-2
IVC



OVERVIEW

Providing critical solutions with integrity and care.



Jag-2

Introducing the Jag-2, an IVC that is lighter and more ergonomic than the original Jag, and compatible with all existing Jag cage systems.

The original Allentown Jag IVC system has been a trusted, reliable and essential part of global research programs for over two decades. As part of Allentown's commitment to customer care and innovation, the Jag-2 was developed to provide research institutions a solution which fits seamlessly into their current infrastructure while improving ergonomics and functionality.

Same Allentown IVC dependability and durability

Lighter, more ergonomic

New casters and improved positioning

Compatible with all existing Jag caging systems

FEATURED DESIGN IMPROVEMENTS

Jag-2 Design Improvements

Lighter weight:

- 25% reduction
- Reduced stainless steel and welding
- NexGen™ rivet fabrication method

Upgraded casters and positioning

Less force required to initiate movement

New Casters

5 x 1.5 and 3.5 x 1.25 inches

Sealed ball bearings

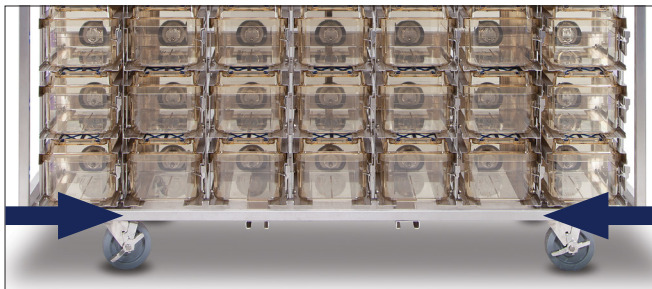
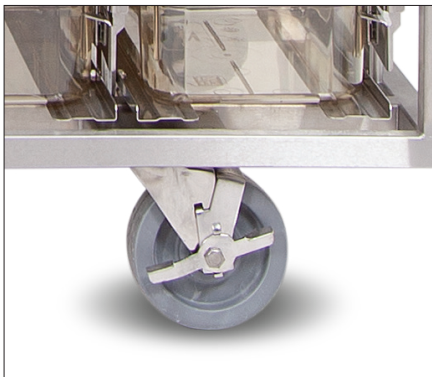
Oversized bore ID for smooth movement

Stainless steel

Polypropylene wheel

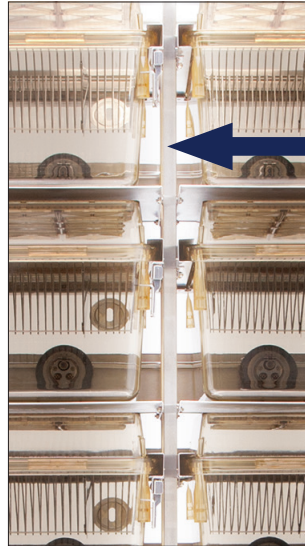
Temp range: -20° to 290° F

Improved positioning

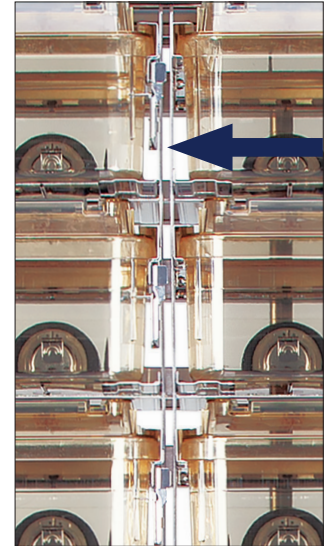


Example of Weight Reduction

NexGen rivet construction allows the use of lighter and compact vertical uprights, replacing the tubular uprights used in the original Jag rack.



Original Jag rack



New Jag-2 rack

Ergonomics – Washing Prep

Easier to prep for cleaning

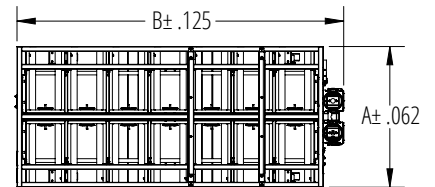
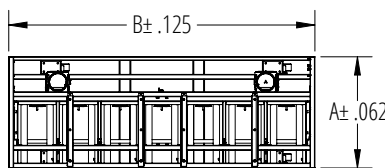
Individual affixed caps vs. large stainless steel doors



SPECIFICATIONS

Size	Depth (A)	Width (B)	Height ¹ (C)	Matrix		Sides	Weights ² (loaded)	Weights ² (unloaded)	Animal Capacity	ACH	Supply Air	Exhaust Air (+)	Exhaust Air (-)	Energy Use (+) / (-)	Heat Load (+) / (-)
	in	in	in	Col.	Row		lbs	lbs			CFM	CFM	CFM	Watts	Watts
5-inch Casters															
70	22.75	62.624	77.371	7	10	1	650	460	350	50	16	12	28	18.1 / 21.2	16.3 / 19.0
80	22.75	71.124	77.371	8	10	1	774	672	400	50	18	14	29	18.3 / 21.2	16.5 / 19.1
140	28.75	66.793	77.371	7	10	2	1075	695	700	50	32	21	52	20.1 / 29.9	18.9 / 26.9
160	28.75	75.293	77.371	8	10	2	1193	571	800	50	36	23	58	25.1 / 33.7	21.9 / 30.3
3.5-inch Casters															
70	22.75	62.624	75.884	7	10	1	650	460	350	50	16	12	28	18.1 / 21.2	16.3 / 19.0
80	22.75	71.124	75.884	8	10	1	774	672	400	50	18	14	29	18.3 / 21.2	16.5 / 19.1
140	28.75	66.793	75.884	7	10	2	1075	695	700	50	32	21	52	20.1 / 29.9	18.9 / 26.9
160	28.75	75.293	75.884	8	10	2	1193	571	800	50	36	23	58	25.1 / 33.7	21.9 / 30.3

Note: Other configurations are available. a) Airflow at sea-level. b) Rack weight without blowers, animals, bedding or watering. c) Airflow tolerance ± 10 %.
¹ Height includes casters. Add 9.74 inches to 11.70 inches for rack mounted blowers ² All weights are approximations



Notes

3.5-inch or 5-inch diameter casters

Optional bumpers may change dimensions

Multiple blower configurations

