

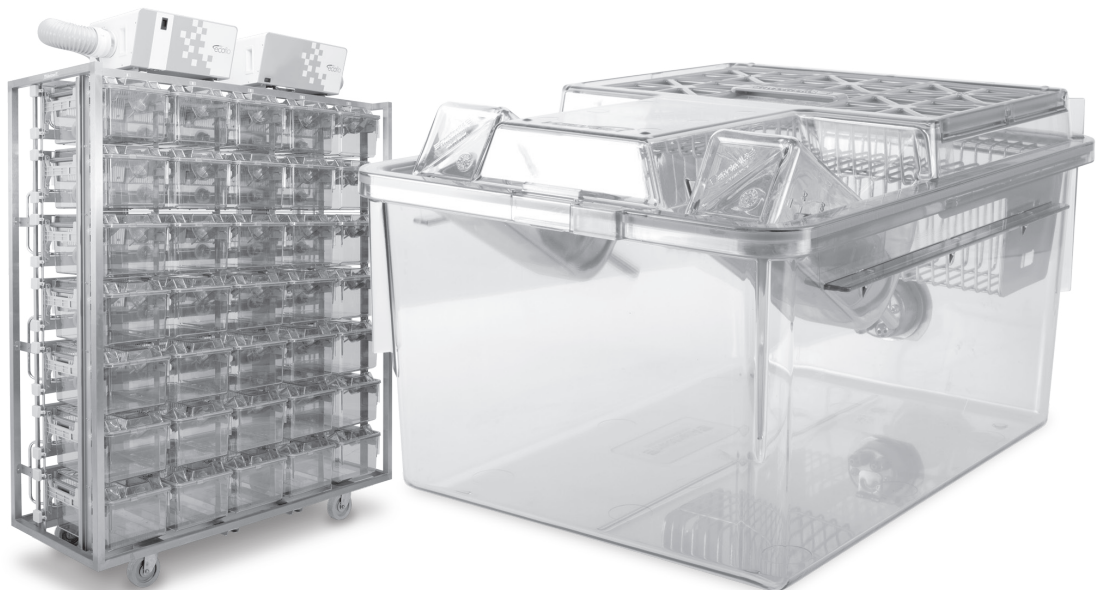


**Your trusted global partner
in life-saving research.**

For over 50 years, Allentown has provided critical solutions to the biomedical research community. Our high-quality equipment and advanced vivarium systems continue to define and exceed industry standards. Like everything we do, our unparalleled customer service is stamped with the Allentown hallmarks of integrity, dedication and care.

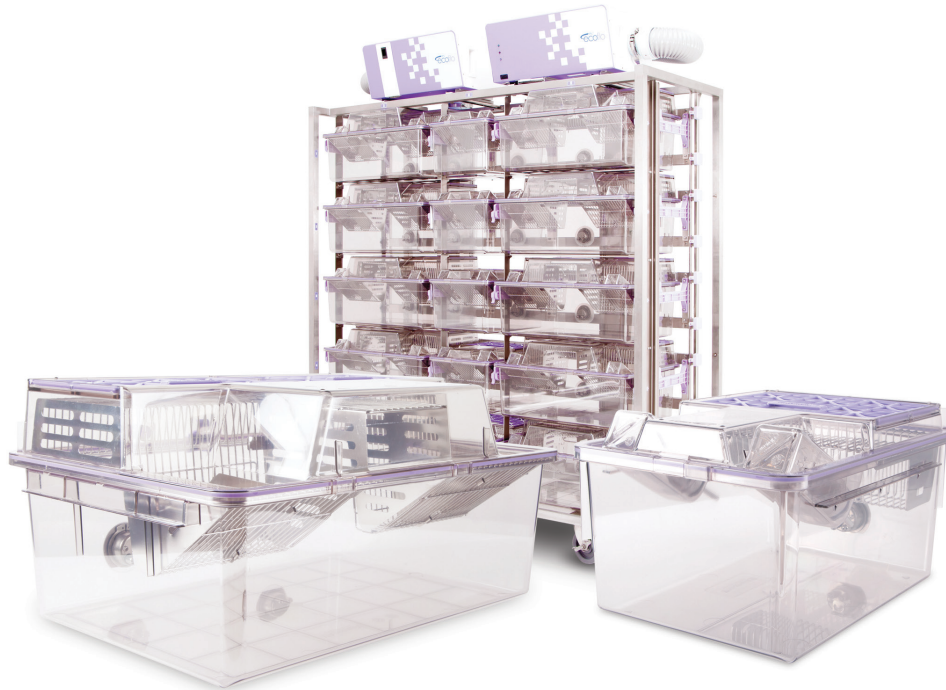
NexGen™

RAT 900



OVERVIEW

Providing critical solutions with integrity and care.



NexGen Rat 900

The lightest, most cost-effective, easiest-to-use animal-friendly IVC system in the LAS industry, now configured for rat housing.

Smooth sliding, easy gliding cage docking / undocking (Validated by third-party ergonomist)

Low vibration spares animals and staff from discomfort

Observation made easier and faster

“Super easy to take cage out of rack”

“It’s so quiet I can barely hear it”

“The functionality and maneuverability alone are excellent”

“All the animals bred well”

“Blower is simple to operate with no vibration issues”

OVERVIEW



IVC System

Positive or negative precision air controlled rack

30, 35, 60, and 70 cage capacities available

Lightweight, compact, and autoclave compatible rack design

Plastic (polysulfone) cage support runners with integrated spring-operated cage lock with docking indicator

Ergonomic, single-finger motion docking with auto-locking feature

Horizontal airflow manifolds with tethered dual silicone end caps for ease of cleaning

5-inch diameter stainless steel casters with gray polypropylene wheels with sealed ball bearings and four foot-operated brakes

Rear exhaust and supply plenum configurations for single-sided IVCs, or same side exhaust and supply plenum configurations for double-sided IVCs

4-inch diameter vertical supply and 4-inch diameter vertical exhaust plenums with back and bottom door access

304 stainless steel, welded frame construction, utilizing both square and rectangular structural tubing

Cage air tubes are 304 stainless steel

Automatic watering available

Row and column identification labels

Model number and serial number identification labels

Compatible with all configurations of EcoFlo™ blowers

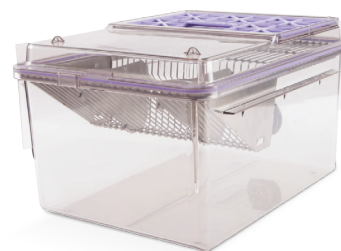
Compatible with WiVarium Plus™ and Wi-Com Vantage™

Compatible with Sentinel™ EAD® and Sentinel2™ Colony Health Monitoring systems

Compatible with Wi-Com Sensus™ RFID census solution

Combo rack option accommodates both NexGen Rat 900 and 1800 cages (15 and 30 cage capacities available)

Accommodates both NexGen reusable and EasyCage® single-use cage systems



Cage System

Cage floor space of 142 in²

Clear polysulfone plastic

Gasketed cage lid ensures safety and protection from damage

Clear cage and flip-up / stay-up cardholders improve observations

Easily accessible water bottles (EBT)

Hinged filter retainer swings up for easy filter replacements

Compact nesting and stacking for more efficient autoclaving throughput

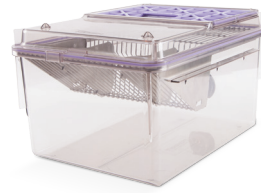
Available with or without locks and with multiple feeder configurations

COMPONENTS

Cage System with External Bottle Top
11.818 in x 9.229 in x 16.228 in
Floor space: 142 in²



Cage System with Micro Barrier Top
11.818 in x 9.229 in x 16.228 in
Floor space: 142 in²



Bottle



250 mL | .62 lbs (filled)
Item # PC250BCL+SLC



350 mL | .87 lbs (filled)
Item # PC350BCL+SLC

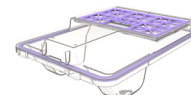
Top



External Bottle Top
11.806 in x 4.518 in x 16.157 in | 1.95 lbs
Item # 225440-1 (without locks)
Item # 225440-2 (with locks)



Micro Barrier Top
11.806 in x 1.930 in x 16.220 in | 1.65 lbs
Item # 225556-1 (without locks)
Item # 225556-2 (with locks)



External Hydropac® Top*
11.806 in x 5.006 in x 16.157 in | 2.00 lbs
Item # 229382-1 (without locks)
Item # 229382-2 (with locks)

Cardholder

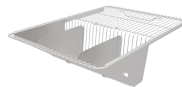


3 in x 5 in Vertical
Item # VH35P9-8
(also available in 3 in x 4 in
Item # VH34P9-8)



3 in x 5 in Horizontal
Item # HH35P9-8
(also available in 3 in x 4 in
Item # HH34P9-8)

WBL / Feeder



Wire Bar Lid
Food capacity: 771 g
11.142 in x 3.904 in x 15.271 in | 1.60 lbs
Item # 412417



Half Pocket Wire Bar Lid
Food capacity: 998 g
11.142 in x 4.812 in x 8.495 in | 1.00 lbs
Item # 412410

Enrichment



Cage Divider
9.66 in x 10.9 in x 14.7 in | .55 lbs
Item # 228543



Enrichment Loft
7.430 in x 4.188 in x 3.525 in | .30 lbs
Item # 315584

Cage



Cage
11.818 in x 7.638 in x 15.533 in | 2.70 lbs
Item # 225720-1 (without automatic
watering – shown above)
Item # 225720-2 (with automatic watering)

SPECIFICATIONS

Size	Depth (A)	Width (B)	Height ¹ (C)	Height ^{1,2} (D)	Matrix		Sides	Weights ³ (loaded)	Weights ³ (unloaded)	Animal Capacity	ACH	Supply Air	Exhaust Air (+)	Exhaust Air (-)	Energy Use	Heat Load
	in	in	in	in	Col.	Row		lbs	lbs			CFM	CFM	CFM	Watts	Watts
5-inch Casters																
30	24.5	65.066	67.26	68.41	5	6	1	500	271	60	60	17	13	21	12.1	10.9
35	24.5	65.066	77.20	78.35	5	7	1	530	308	70	60	20	15	25	13.8	12.4
60	35.0	69.250	67.26	68.41	5	6	2	690	317	120	60	35	26	44	21.6	19.4
70	35.0	69.250	77.20	78.35	5	7	2	765	370	140	60	40	30	50	21.8	19.6

Note: a.) Airflow at sea-level b.) Rack weight without blowers, animals, bedding or watering c.) Airflow tolerance ± 10 % d.) Other configurations available.
¹ Height includes casters. Add 9.74 inches to 11.70 inches for rack mounted blowers ² Height includes removable runners and collars ³ All weights are approximations

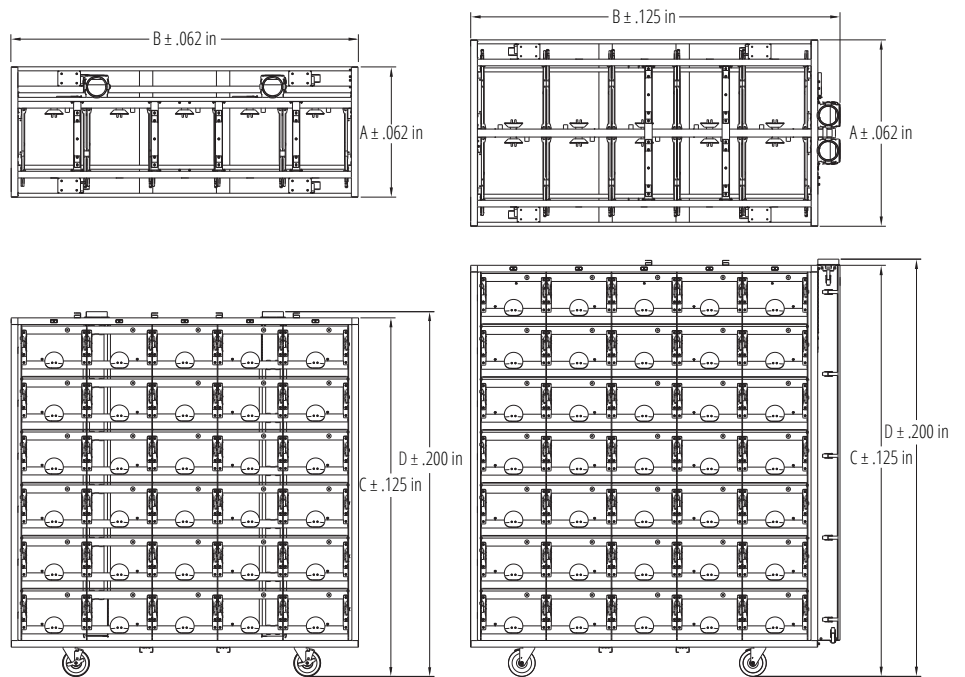
Notes

5-inch diameter casters

Optional top panel

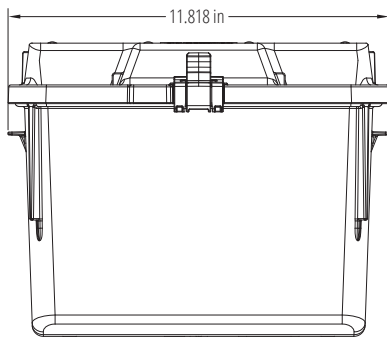
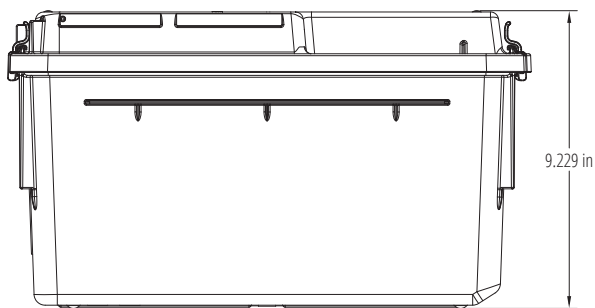
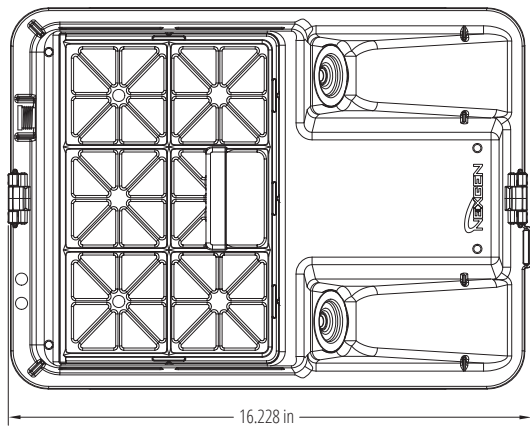
Optional bumpers may change dimensions

Multiple blower configurations



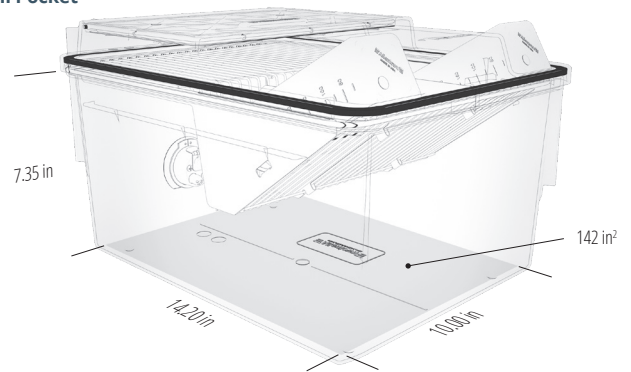
SPECIFICATIONS

External Dimensions

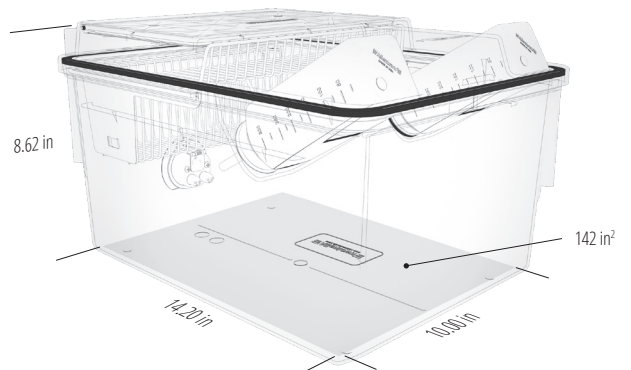


Internal Dimensions

Full Pocket

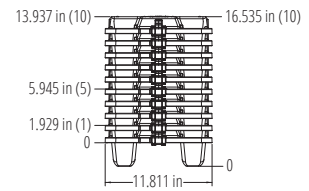
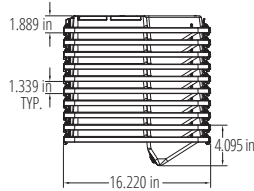
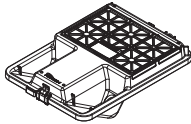


Half Pocket

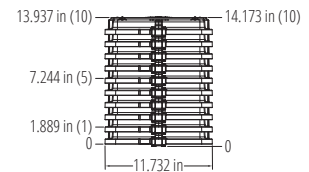
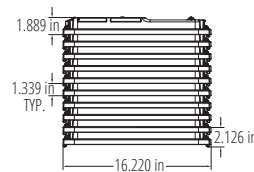
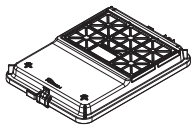


SPECIFICATIONS

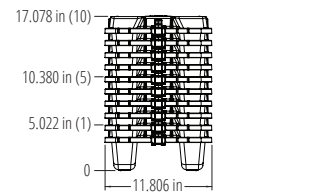
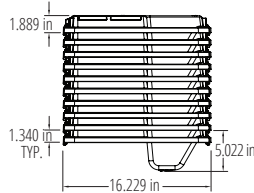
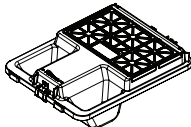
External Bottle Top



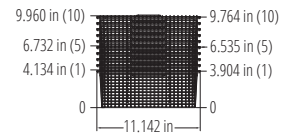
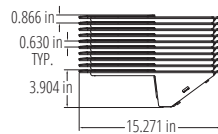
Micro Barrier Top



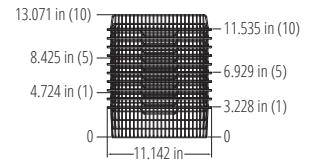
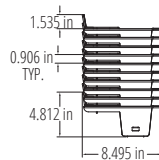
External Hydropac Top



Full Pocket Wire Bar Lid



Half Pocket Wire Bar Lid



Cage

