

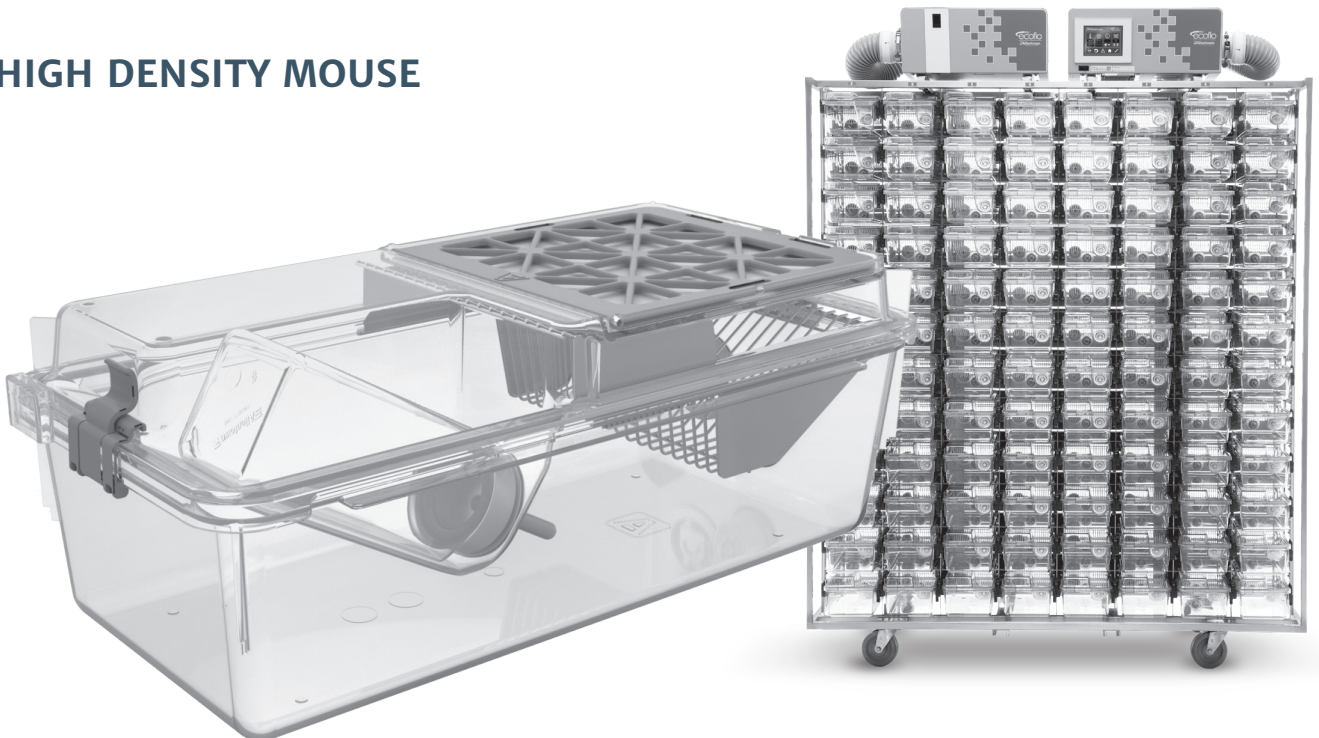


**Your trusted
global partner
in life-saving research**

For over 50 years, Allentown has provided critical solutions to the biomedical research community. Our high-quality equipment and advanced vivarium systems continue to define and exceed industry standards. Like everything we do, our unparalleled customer service is stamped with the Allentown hallmarks of integrity, dedication and care.

NexGen™ MAX™

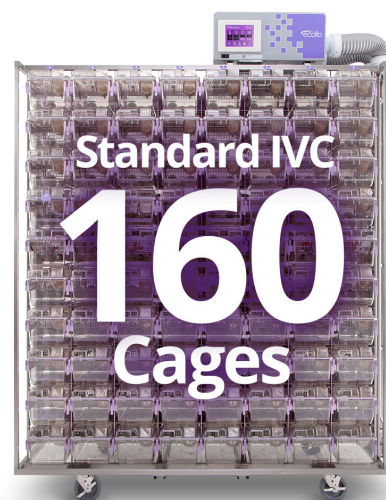
HIGH DENSITY MOUSE



OVERVIEW

Providing critical solutions with integrity and care.

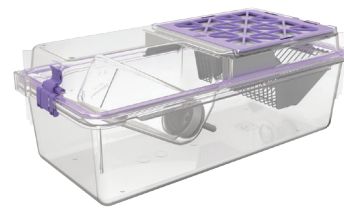
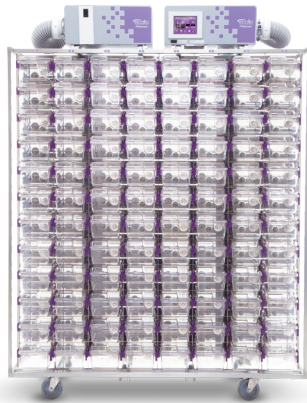
**20%
MORE CAGES
IN THE SAME SIZE IVC**



More Room. In the Same Room.

With the cost of floor space increasing with each passing year, every research facility in the Lab Animal Science industry understands the need to maximize cage density within their vivarium. Enter NexGen MAX, the new Maximum Density IVC and Cage System from Allentown that increases cage density by 20% - using IVCs that are the same size and occupy the same footprint as our standard units. Available with automatic watering or with optional bottle, MAX IVCs accommodate both the NexGen MAX reusable cage system AND the EasyCage MAX disposable cage system. One rack, two cage types, many, many more cages. Just what you'd expect from Allentown, your Global Solutions Provider.

COMPONENTS



IVC System

- Positive or negative precision air controlled rack
- Exhaust plenum always negative to the room
- Up to 192-cage capacity
- Whole rack system and cages are autoclavable up to 134 °C¹ and chemically sterilisable
- Plastic (polysulfone) cage support runners with integrated spring-operated cage lock with docking indicator
- Ergonomic, single-finger motion docking with auto-locking feature
- Multi-directional 127 mm and 89 mm diameter stainless steel casters with gray polypropylene wheels with sealed ball bearings and four foot-operated brakes
- Dismantable horizontal airflow manifolds with tethered dual plastic end caps for ease of cleaning
- Rear exhaust and supply plenum configurations for single-sided IVCs, or same side exhaust and supply plenum configurations for double-sided IVCs
- 100 mm diameter vertical supply and 100 mm diameter vertical exhaust plenums with back and bottom door access
- 304 stainless steel, welded frame construction, utilizing both square and rectangular structural tubing
- Cage air tubes are 304 stainless steel
- Automatic watering available
- Row and column identification labels
- Model number and serial number identification labels
- Compatible with all configurations of EcoFlo™ blowers
- Compatible with WiVarium Plus™ and Wi-Com Vantage™
- Compatible with Sentinel™ EAD® and Sentinel2™ Colony Health Monitoring systems
- Compatible with Wi-Com Sensus™ RFID census solution
- Accommodates both NexGen MAX reusable and EasyCage® MAX single-use cage systems

Cage System

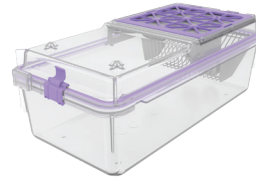
- Cage floor space of 523 cm²
- Clear polysulfone plastic
- Gasketed cage lid ensures safety and protection from damage
- Clear cage and flip-up / stay-up cardholders improve observations
- Easily-accessible water bottles (EBT)
- Hinged filter retainer swings up for easy filter replacements
- Compact nesting and stacking for more efficient autoclaving throughput
- Available with or without locks and with multiple feeder configurations
- Lightweight plastic feeder tray (PFT)

COMPONENTS

Cage System with External Bottle Top
194 mm x 144 mm x 398 mm
Floor space: 523 cm²



Cage System with Micro Barrier Top
194 mm x 144 mm x 398 mm
Floor space: 523 cm²



Bottle



250 mL | 281 g (filled)
Item # PC250BCL + SLC250-200-NW¹

Top



External Bottle Top
186 mm x 106 mm x 398 mm | 431 g
Item # 232740-1 (without locks)
Item # 232740-2 (with locks)



Micro Barrier Top
186 mm x 53 mm x 398 mm | 544 g
Item # 232743-1 (without locks)
Item # 232743-2 (with locks)

Cardholder



76 mm x 102 mm Vertical
Item # VH34P9-8
(also available in 76 mm x 127 mm
Item # VH35P9-8)



76 mm x 102 mm Horizontal
Item # HH34P9-8
(also available in 76 mm x 127 mm
Item # HH35P9-8)

WBL / Feeder



Half Pocket Wire Bar Lid
Food capacity: 376 g
170 mm x 87 mm x 212 mm | 209 g
Item # 317274



Dual PFT with Stainless Steel Grate
Food capacity: 853 g
170 mm x 85 mm x 212 mm | 204 g
Item # 230763-1



Single PFT with Stainless Steel Grate (Hydropac^{®2})
Food capacity: 426 g
170 mm x 85 mm x 210 mm | 204 g
Item # 230764-1

Enrichment



Enrichment Loft
83 mm x 69 mm x 118 mm | 45 g
Item # 316961-1



Safe Harbor Mouse Retreat™
64 mm x 70 mm x 114 mm | 50 g
Item # BIO-K3583

Cage



NexGen MAX Cage
194 mm x 107 mm x 381 mm | 549 g
Item # 232822-1 (without automatic watering – shown above)
Item # 232822-2 (with automatic watering)

SPECIFICATIONS

Size	Depth (A) mm	Width (B) mm	Height (C) ¹		Height (D) ^{1,2}		Matrix		Sides	Weights ³ (loaded) kg	Weights ³ (unloaded) kg	Animal Capacity	ACH	Supply Air m ³ /hr	Exhaust Air (+) m ³ /hr	Exhaust Air (-) m ³ /hr	Energy Use Watts	Heat Load Watts
			89 mm Casters	127 mm Casters	89 mm Casters	127 mm Casters	Col.	Row										
			mm	mm	mm	mm												
NexGen MAX																		
72 ⁴	622	1313	1996	2034	2024	2062	6	12	1	277	159	360	50	22.10	17.00	27.20	16.8	15.1
84 ⁴	622	1518	1996	2034	2024	2062	7	12	1	291	172	420	50	25.50	20.40	30.60	17.6	15.8
96 ⁴	622	1722	1996	2034	2024	2062	8	12	1	305	186	480	50	28.90	23.80	35.70	18.4	16.6
144 ⁴	889	1419	1996	2034	2024	2062	6	12	2	433	208	720	50	44.20	35.70	52.70	21.5	19.4
168 ⁴	889	1624	1996	2034	2024	2062	7	12	2	461	235	840	50	52.70	40.80	62.90	23.1	20.8
192 ⁴	889	1829	1996	2034	2024	2062	8	12	2	489	263	960	50	59.50	47.60	71.40	24.7	22.2
Increased Tier Spacing Option*																		
60	622	1313	1794	1832	1823	1861	6	10	1	220	152	300	50	18.53	14.79	22.10	14.9	13.5
70	622	1518	1794	1832	1823	1861	7	10	1	243	164	350	50	21.59	17.17	25.84	15.7	14.1
80	622	1722	1794	1832	1823	1861	8	10	1	266	176	400	50	24.65	19.72	29.58	16.4	14.7
120	889	1419	1794	1832	1823	1861	6	10	2	313	177	600	50	36.89	29.58	44.37	19.2	17.4
140	889	1624	1794	1832	1823	1861	7	10	2	360	201	700	50	43.18	34.51	51.68	20.6	18.6
160	889	1829	1794	1832	1823	1861	8	10	2	406	224	800	50	49.30	39.44	59.16	22.0	19.8
66	622	1313	1958	1996	1987	2025	6	11	1	234	159	330	50	20.40	16.32	24.48	15.4	13.8
77	622	1518	1958	1996	1987	2025	7	11	1	260	172	385	50	23.80	19.04	28.39	16.2	14.5
88	622	1722	1958	1996	1987	2025	8	11	1	285	185	440	50	27.03	21.76	32.47	16.9	15.2
132	889	1419	1958	1996	1987	2025	6	11	2	341	191	660	50	40.63	32.47	48.79	20.0	18.0
154	889	1624	1958	1996	1987	2025	7	11	2	392	217	770	50	47.43	37.91	56.95	21.6	19.4
176	889	1829	1958	1996	1987	2025	8	11	2	443	243	880	50	54.23	43.35	65.11	23.2	20.8
72 ⁵	622	1313	2122	-	2150	-	6	12	1	285	166	360	50	22.10	17.00	27.20	15.8	14.2
84 ⁵	622	1518	2122	-	2150	-	7	12	1	299	180	420	50	25.50	20.40	30.60	16.6	15.0
96 ⁵	622	1722	2122	-	2150	-	8	12	1	313	193	480	50	28.90	23.80	35.70	17.5	15.7
144 ⁵	889	1419	2122	-	2150	-	6	12	2	418	183	720	50	44.20	35.70	52.70	20.9	18.8
168 ⁵	889	1624	2122	-	2150	-	7	12	2	446	210	840	50	52.70	40.80	62.90	22.6	20.3
192 ⁵	889	1829	2122	-	2150	-	8	12	2	474	238	960	50	59.50	47.60	71.40	24.3	21.9

Note: a.) Airflow at sea-level b.) Rack weight without blowers, animals, bedding or watering c.) Airflow tolerance ± 10 % d.) Other configurations available.

* Increased Tier Spacing NexGen/EasyCage MAX rack allows the removal of the water bottle without undocking cage when used with NexGen MAX cage - see sales representative for capacity gained over standard NexGen/EasyCage rack.

¹ Height includes casters. Add 247 mm to 297 mm for rack mounted blowers ² Height includes removable runners and collars ³ All weights are approximations

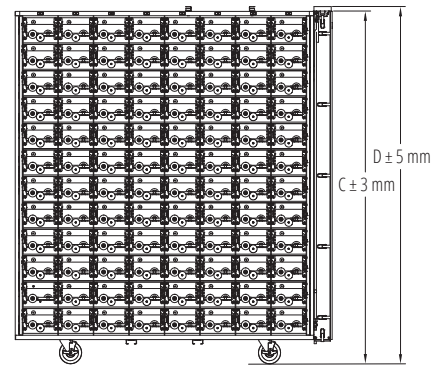
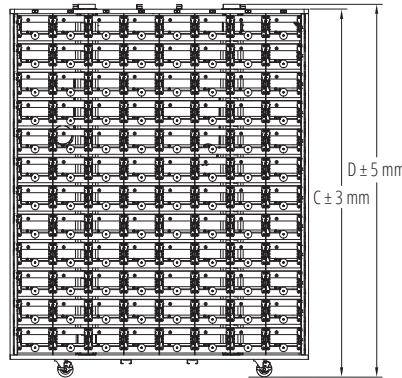
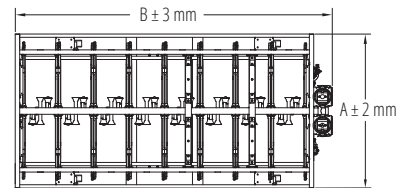
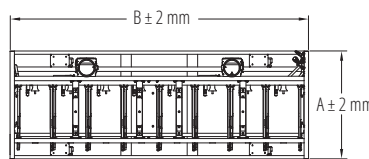
⁴ Cages must be partially undocked to remove water bottle ⁵ 127 mm casters not offered in this configuration

Notes

Optional top panel

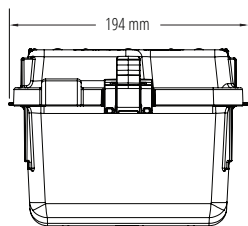
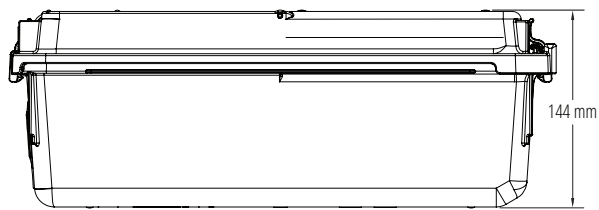
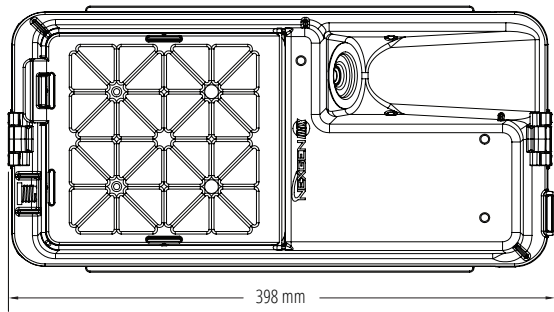
Optional bumpers may change dimensions

Multiple blower configurations



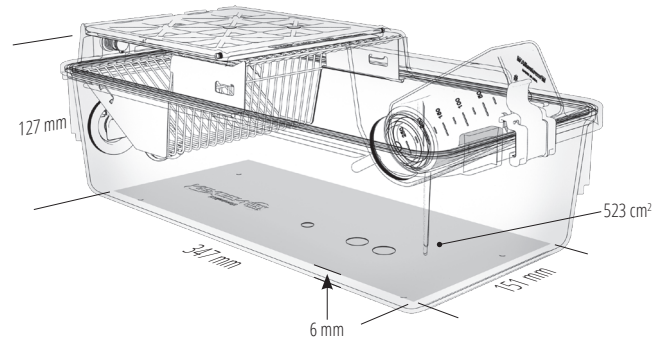
SPECIFICATIONS

External Dimensions

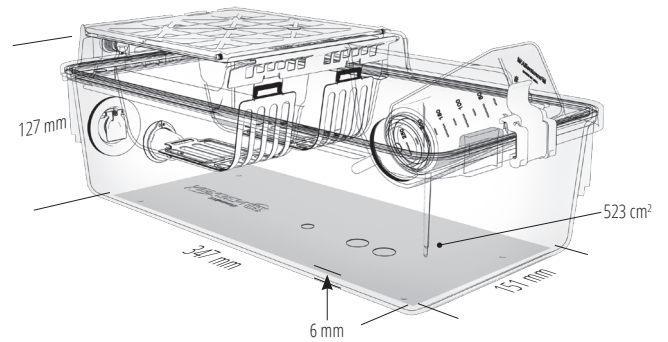


Internal Dimensions

Half Pocket

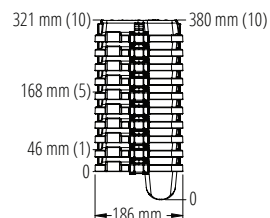
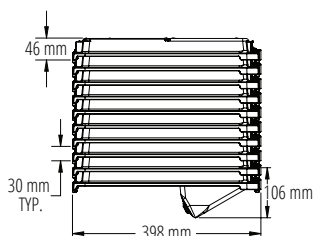
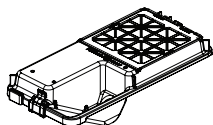


PFT

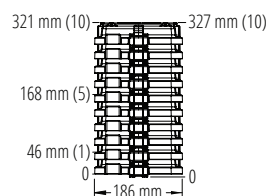
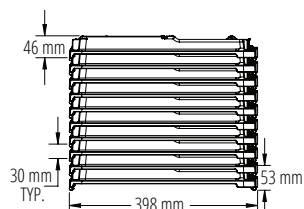
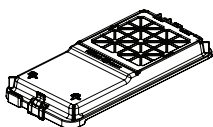


SPECIFICATIONS

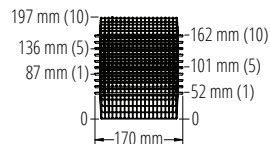
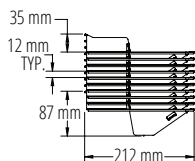
External Bottle Top



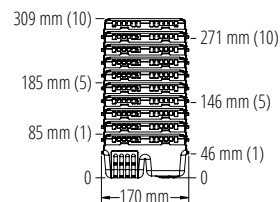
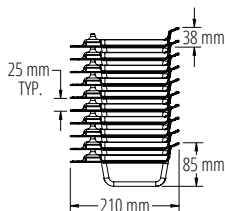
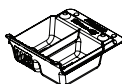
Micro Barrier Top



Half Pocket Wire Bar Lid



PFT



Cage

